

# SAFE | 2019

Year-end performance  
overview April 1, 2019 through  
March 31, 2020



**19,617**\*

SAFEline Contacts  
• 16,557 Calls  
• 2,947 Chats/texts  
• 113 Walk-ins

\* does not include face-to-face contacts



**6,628**

youth and adults served



**101,963**

bed nights/days of care



**491**

Sexual assault forensic  
exams provided



**32,981**

Community members/  
professionals in

**1,282**

trainings/presentations



**1,322**

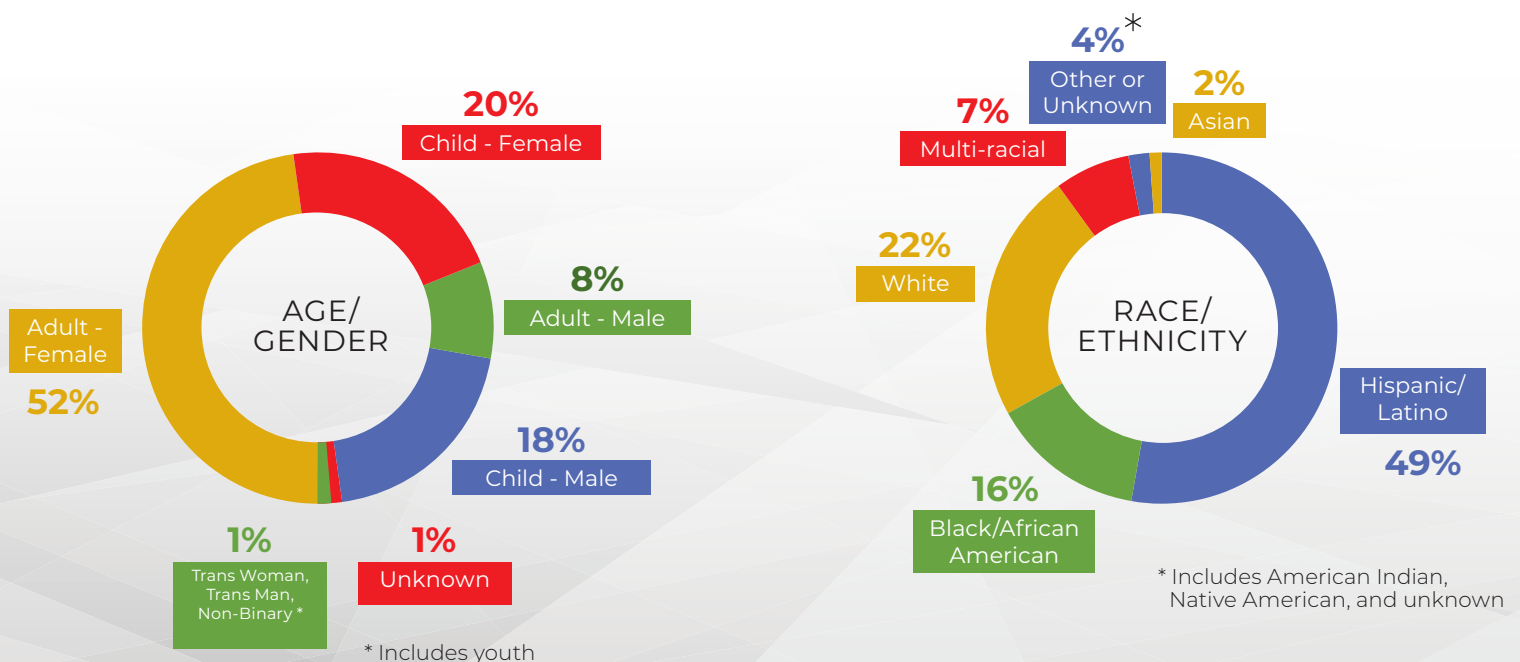
volunteers

**34,155**

dedicated  
hours

**55% of clients disclosed more than one type of victimization.**  
**77% of clients have received services from more than one program.**

## Who we serve



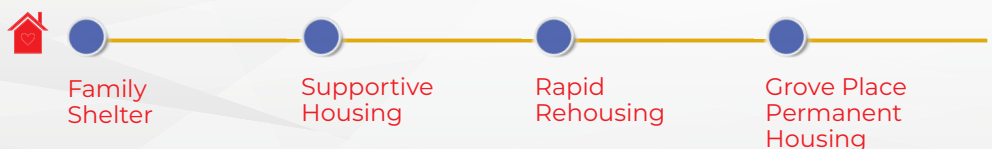


# SAFE services

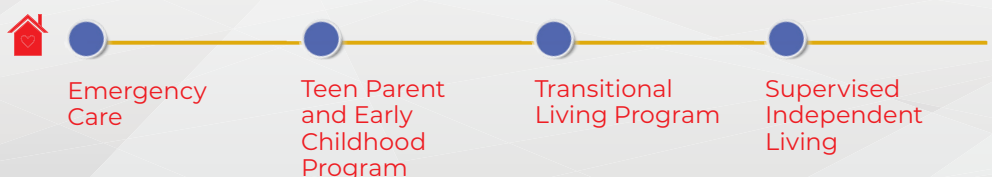
SHELTER/HOUSING	2018 Actual	2019 Projection	2019 Actual
<b>Emergency Care Cottage:</b> youth served	100	120	77
<b>Teen Parent &amp; Early Childhood Program:</b> children and youth served	46	44	34
<b>Transitional Living:</b> older teens served	31	30	31
<b>Supervised Independent Living:</b> youth exiting foster care served	13	13	15
<b>Rathgeber Village:</b> total youth served	181	—	141
<b>Rathgeber Village</b> days of care	17,259	—	14,710
<b>Foster and Adopt in Austin:</b> children placed	27	40	46
<b>Foster and Adopt in Austin:</b> days of care	7,720	—	5,324
<b>Family Shelter:</b> adult survivors and their children served	585	600	637
<b>Grove Boulevard:</b> bed nights	83,378	—	81,905
<b>Supportive Housing at Grove:</b> adults and youth served	233	220	202
<b>Youth Rapid Rehousing:</b> total housed	—	—	20

SAFE operates licensed housing services at our Rathgeber Village and housing for individuals and families at our Grove campuses

## GROVE CAMPUS HOUSING OPPORTUNITIES



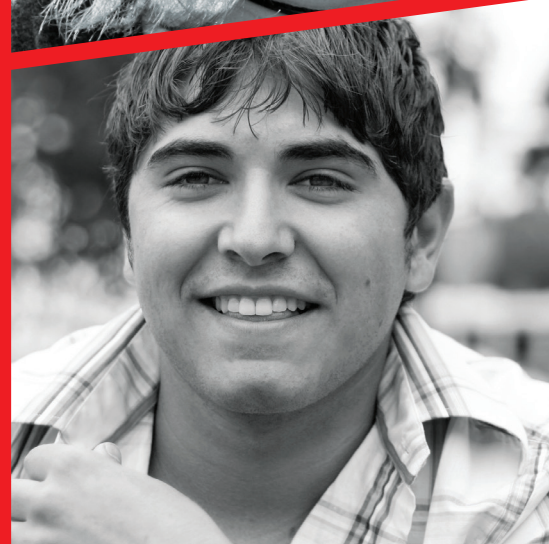
## RATHGEBER VILLAGE LICENSED HOUSING OPPORTUNITIES





<b>PREVENTION AND EDUCATION</b>	<b>2018 Actual</b>	<b>2019 Projection</b>	<b>2019 Actual</b>
<b>Community Education:</b> people reached	2,978	4,000	4,839
<b>Deaf SHARE:</b> people reached	743	600	577
<b>Disability Services:</b> people reached	2,765	1,600	4,124
<b>Expect Respect:</b> people trained and educated	12,358	13,000	10,629
<b>Expect Respect:</b> individual and group participants	789	750	816
<b>Family Tree:</b> children in child development center	61	70	61
<b>Fatherhood Services:</b> people reached	85	100	68
<b>SAFE Futures DV and parenting classes:</b> people reached	457	750	889
<b>SAFE School (k-12):</b> children who attended	159	175	159
<b>Strong Start:</b> at risk children and parents benefiting from parent education	1,400	1,680	1,285

<b>ADVOCACY AND FACE-TO-FACE SUPPORT</b>	<b>2018 Actual</b>	<b>2019 Projection</b>	<b>2019 Actual</b>
<b>Alumni Services:</b> foster care alumni served	31	40	49
<b>Community Resource Advocacy:</b> people impacted	815	700	826
<b>Counseling/Therapeutic Services:</b> people served	1,358	1,150	1,427
<b>Grove Place Apartments:</b> people who received support	197	225	150
<b>Health Services:</b> people served	486	—	359
<b>Legal Services:</b> people served	2,276	1,705	2,161
<b>Peer Support:</b> survivors supported by survivors	235	315	303
<b>Planet SAFE:</b> child exchanges or supervised visitation	959	815	1,058
<b>SAFE CARES:</b> victims of sex trafficking served	247	200	192
<b>Sexual Assault Forensic Nurse visits</b>	661	700	612
<b>Sexual Assault Victim Advocacy</b>	677	700	628



# Outcomes

## Transformative Relationships

### SAFE outcomes

98% of youth in residential programs identified one positive relationship with a trusting adult.

### Why this matters

"All of the youth we serve have experienced some form of trauma. Our job is to form healthy relationships with youth through connection, consistency and safety." Monica Martinez, Teen Parent and Early Childhood Director

88% of adult clients reported a decreased sense of isolation.

"Everyone deserves a sense of belonging and community. Connection with other survivors is a catalyst for growth." Ramona Brown, Survivor Peer Support Specialist

90% of adult counseling clients reported an increased ability to manage the effects of trauma.

"Trauma can impact physical and mental health and cause difficulties with relationships and daily functioning. Counseling increases healthy coping techniques, thereby improving wellbeing." Linda Gutierrez, Bilingual Counseling Services Manager

## Prevention

### SAFE outcomes

90% of youth participating in Expect Respect reported increased motivation to speak up when they see abusive or harassing behaviors.

### Why this matters

"Young people have the power to influence their peers. We support them in having the courage to speak up when someone is being mistreated, whether it is bullying, sexual assault or dating violence." Barri Rosenbluth, Senior Director, Expect Respect

81% of parents participating in Strong Start showed an increase in parental confidence and healthy parenting skills.

"When parents gain skills, confidence and knowledge, they make better parenting choices, which in turn makes them less prone to a cycle of abuse and trauma." Lisa Gonzales, Bilingual Parent Educator

## Safety

### SAFE outcomes

94% of adult clients surveyed reported increased safety.

### Why this matters

"As survivors connect with our staff, we witness them begin to feel safe, which leads to healing and independence." Qunisha Simmons, Family Shelter Director

85% of clients reported that through Community Resource Advocacy (case management) they were able to obtain and maintain stable housing.

"Shelter is a basic human need, but leaving an abusive partner can often mean losing financial support and even facing homelessness. By helping survivors get stable housing, we help create a space for them to heal." Claudia Thompson, Community Resource Advocacy Director

Confidential, 24-hour **SAFEline**

Call: **512.267.SAFE (7233)** Text: **737.888.7233** Chat: **[safeaustin.org/chat](https://safeaustin.org/chat)**

For Deaf, DeafBlind, DeafDisabled, and Hard of Hearing people, please use relay/VRS